



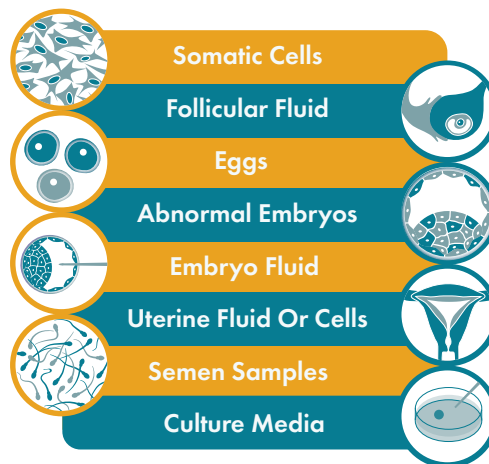
The First Canadian Fertility Biobank

A biobank is a collection of biological samples linked with de-identified clinical data, which is organized in a structured, readily analyzable format and samples are made available to researchers.

The **CReATe Biobank** is an investigator initiated biobanking program founded in 2015 as an adjunct to the CReATe Fertility Centre (CFC) in Toronto. Under the leadership of Dr. Clifford Librach, we are entirely focused on human reproductive biology-related samples. The biobank is operated as a non-profit organization.

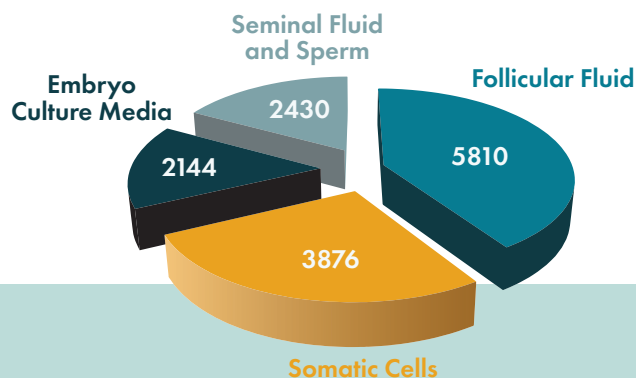
It is **our mission** to facilitate research in fertility and to support the development of novel diagnostic tests and treatments.

Our samples along with de-identified **clinical data** are obtained from consenting participants undergoing fertility assessment and treatments. The biobank collects and stores materials that would otherwise be discarded. The collected samples can then be used by researchers in REB-approved studies to improve the diagnosis and treatment of infertility and increase scientific knowledge. We preserve many types of samples for research including:



* Plans are in place to collect blood and urine samples

Our biobank contains greater than **10,000 samples** and is continuously growing each day



Quality Management System

As a certified biobank, we have established a quality management system to ensure the **highest quality** specimens and data, while protecting the donor's rights, including privacy and confidentiality. Validation of our processes enables our stakeholders to have confidence in data accuracy and quality of our samples.



Our QMS includes:

- Standardized sample collection, processing, and storage protocols (SOPs)
- Trained personnel in all SOPs associated with their job responsibilities
- 24/7 monitored storage systems
- Processing and storage of all data in accordance with PHIPA
- Efficient data and sample management through an IT infrastructure that supports collection, administration and retrieval

Access

CFC researchers formally started utilizing banked biological samples for internal research projects in 2016 and currently rely on the biobank for the majority of their research projects, but we also collaborate with external parties:



Currently, external researchers gain access via **collaboration** with the CReATe Research Program.

Submit an application form along with the criteria for the samples you are looking for

Fill and send the Material Transfer Agreement (MTA) and documentation of Research Ethics Board (REB) approval

If samples are not available
Samples will be collected prospectively

If samples are available
Your request will be approved

Samples will be shipped to the recipients

Services

The CReATe Biobank has developed a comprehensive library of annotated patient samples and offers the following services

- Access to retrospectively collected biospecimens
- Prospective collection of samples tailored to your requirements
- Banking services according to your study directions

For any inquiries please contact biobank manager at

Email: Sahar@createivf.com

Phone: 416-323-7727 ex:2255

To learn more about our research program and the ongoing projects please visit:

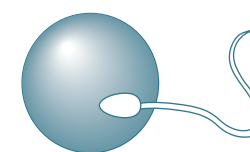
<https://www.createivf.com/>

The CReATe Biobank has been approved by University of Toronto Research Ethics Board and certified through



Biobank Resource Centre

Developed by the University of British Columbia Office of Biobank Education and Research and the Canadian Tissue Repository Network



**CReATe
BioBank**

For Reproductive Research